

CHAPTER 26 — FIRE PROTECTION

TABLE OF CONTENTS

Paragraph Number	Title	Chapter/Section Number	Page Number
FIRE PROTECTION			
26-1	Hand Fire Extinguisher	26-00-00	3
26-2	Hand Fire Extinguisher — Operation	26-00-00	3
26-3	Hand Fire Extinguisher — Removal	26-00-00	3
26-4	Hand Fire Extinguisher — Inspection	26-00-00	3
26-5	Hand Fire Extinguisher — Installation	26-00-00	3

FIGURES

Figure Number	Title	Page Number
26-1	Fire Extinguisher	4
26-2	Fire Extinguisher Operation	5

FIRE PROTECTION

26-1. HAND FIRE EXTINGUISHER

A manually operated fire extinguisher is furnished with each helicopter. The extinguisher is located on the forward side near the top of the control tube vertical tunnel or on the aft end of the console (Figure 26-1). Mounting brackets are the quick-opening type for rapid removal of extinguisher and are secured with screws, spacers, washers, nuts, and nutplates.

The extinguisher consists of two major parts. The operating head embodies a discharge nozzle, operating lever, safety catch or pin and red discharge indicator disc. Body of extinguisher is the agent container and incorporates a pressure gauge. Extinguisher is charged with Halon 1211 and is rechargeable at the factory. Replacement cylinders are available.

Engine fire protection consists of engine firewalls for containment.

26-2. HAND FIRE EXTINGUISHER — OPERATION

1. Remove fire extinguisher (1, Figure 26-1) from mounting bracket.
2. Release safety catch (3, Figure 26-2) on fire extinguisher handle.
3. Aim nozzle (1) at base of fire and squeeze operating lever (4). To stop spray of extinguisher, release operating lever.

26-3. HAND FIRE EXTINGUISHER — REMOVAL

1. Remove fire extinguisher (1, Figure 26-1) from mounting bracket (6).
2. Remove screws (2), washers (3), spacers (4), and nuts (7) or nutplates (5) that attach bracket (6) to structure. Remove bracket.

26-4. HAND FIRE EXTINGUISHER — INSPECTION

1. Perform a visual inspection as follows:

- a. Inspect gauge needle. Make sure needle is in green sector. If not, replace extinguisher.

- b. Inspect mounting bracket (6, Figure 26-1) for security. Check operation of latch for quick opening and positive locking.

- c. Verify presence of red indicator disc. If indicator disc (2, Figure 26-2) is knocked out, extinguisher has been used. Replace extinguisher.

- d. Verify that safety catch (3) is up or safety pin is installed to lock operating lever (4).

- e. Inspect cylinder for evidence of damage or corrosion.

2. Perform a weight check as follows:

- a. Weigh fire extinguisher (1, Figure 26-1).

- b. Record weight and date on service tag.

- c. Compare weight of unit with weight stated on extinguisher label. Replace if weight is below minimum.

3. Perform a corrosion inspection as follows:

- a. Extinguisher is a pressure vessel and should be protected from corrosion.

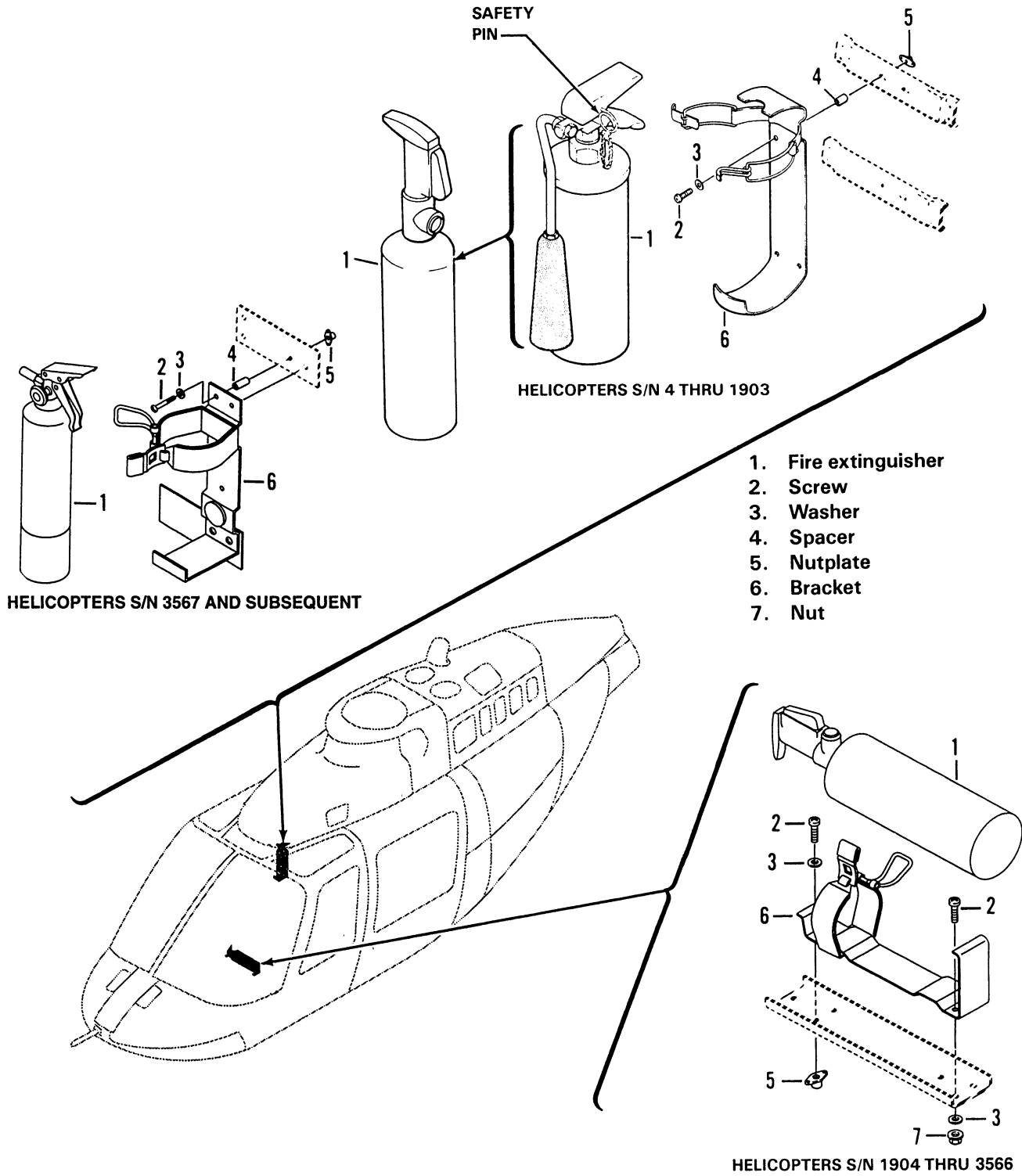
- b. Inspect full surface area of cylinder.

- c. If corrosion damage is found, cylinder should be carefully emptied and discarded.

26-5. HAND FIRE EXTINGUISHER — INSTALLATION

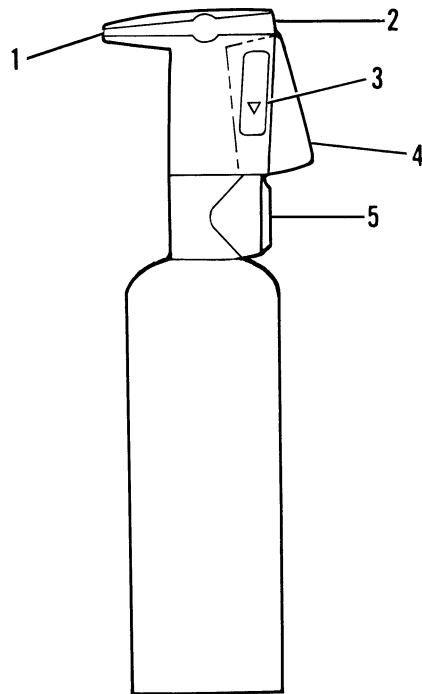
1. Position bracket (6, Figure 26-1) and install screws (2), washers (3), spacers (4), and nuts (7) or nutplates (5).

2. Position fire extinguisher (1) with gauge forward in mounting bracket (6) and lock safety catch.



206A/BS-M-26-1

Figure 26-1. Fire Extinguisher



TYPICAL

1. Nozzle
2. Indicator disc
3. Safety catch
4. Operating lever
5. Pressure gauge

Figure 26-2. Fire Extinguisher Operation

206AB_MM_26_0002

