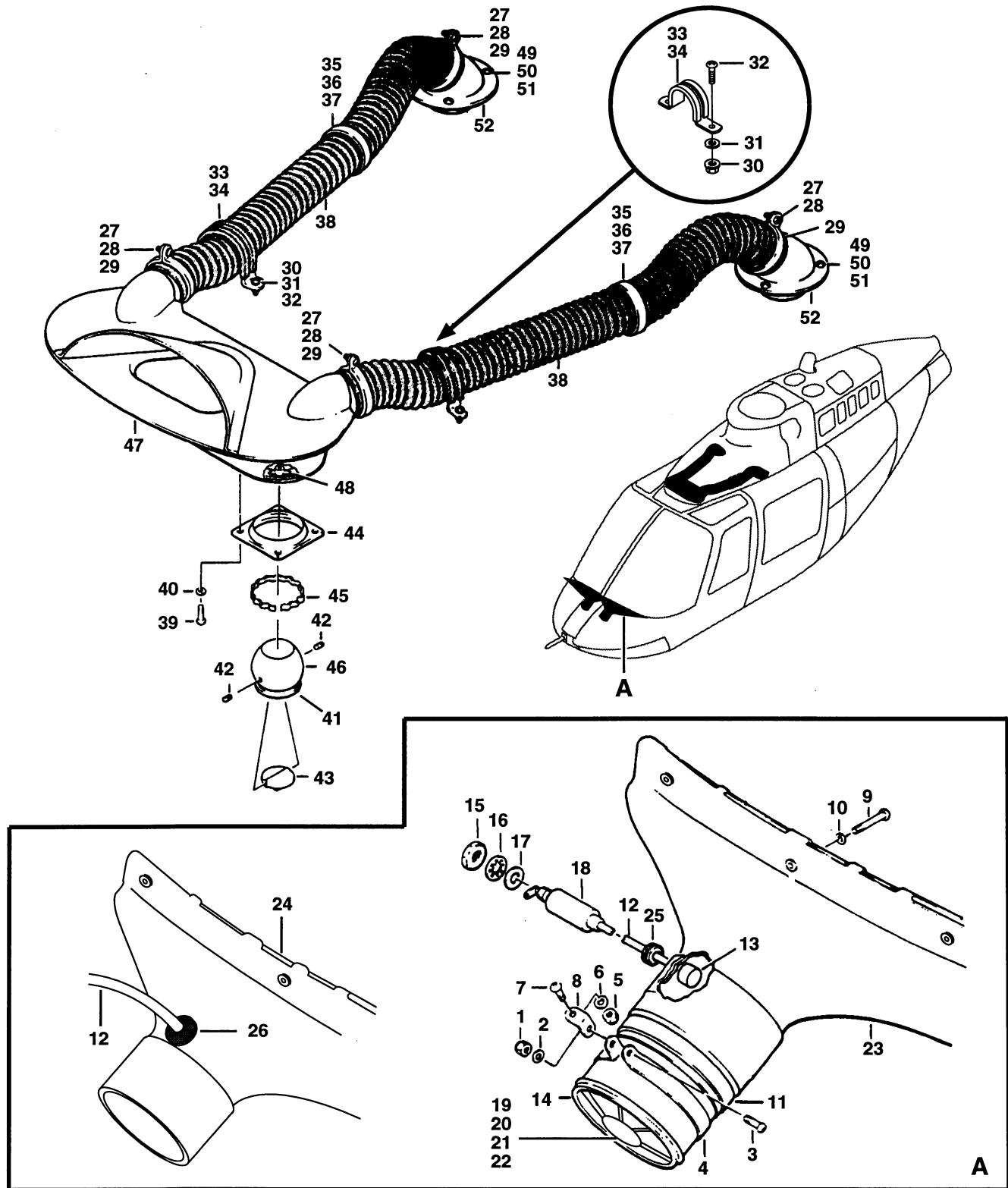


CONTENTS - IPB

Figure Number	Figure Title	Chapter/Section Number	Page Number
21-1	Nozzle, windshield defog and air induction system installations (4 thru 253)	21-99-00	2
21-2	Ventilation system and defog installation, ram air (254 thru 448)	21-99-00	6
21-3	Ventilation system and defog installation, ram air (449 thru 2488)	21-99-00	12
21-4	Ventilation system and defog installation, ram air (2489 thru sub)	21-99-00	18



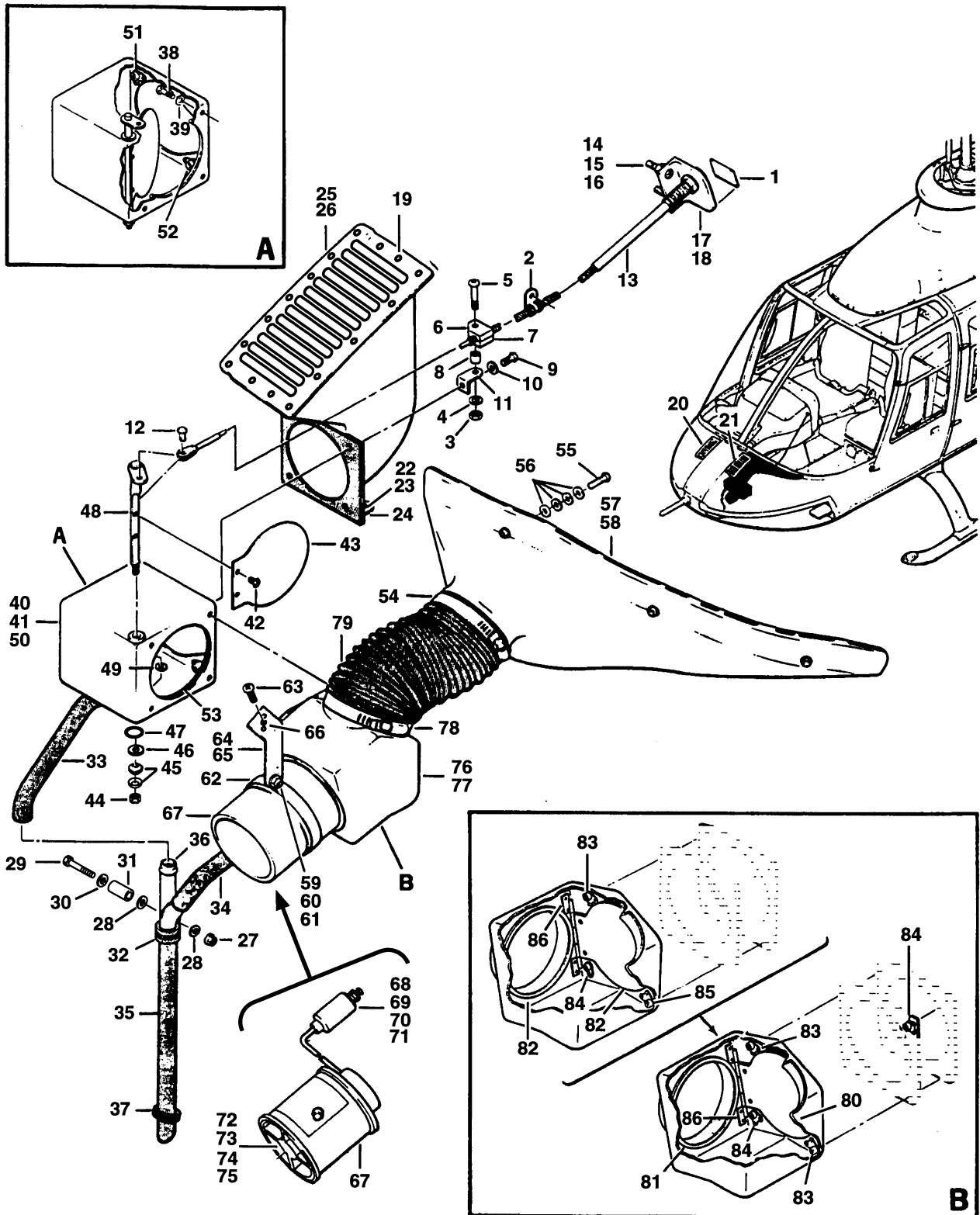
206A/B/B3-21-1001
C0000

Figure 21-1. Nozzle, windshield defog and air induction system installations (4 thru 253)

(1) INDEX NUMBER	(2) PART NUMBER	(3) ITEM NAME	(4) UNIT PER ASSY	(5) A V A I L	(6) U O C
		FIGURE: 21-1. Nozzle, windshield defog and air induction system installations (4 thru 253)			
	206-070-470-001	NOZZLE INSTL, WINDSHIELD DEFOG	1		
	206-070-470-005	NOZZLE INSTL, WINDSHIELD DEFOG	1		
1	NAS679A3	.NUT (REPLACED BY MS21042L3)	2		
1	MS21042L3	.NUT (REPLACES NAS679A3)	2		
2	AN960PD10L	.WASHER (REPLACED BY AN960JD10L)	2		
2	AN960JD10L	.WASHER (REPLACES AN960PD10L)	2		
3	AN520-10R12	.SCREW (REPLACED BY MS35207-265)	2		
3	MS35207-265	.SCREW (REPLACES AN520-10R12)	2		
4	AN735D44	.CLAMP	2		
5	NAS679A3	.NUT (REPLACED BY MS21042L3)	2		
5	MS21042L3	.NUT (REPLACES NAS679A3)	2		
6	AN960PD10L	.WASHER (REPLACED BY AN960JD10L)	2		
6	AN960JD10L	.WASHER (REPLACES AN960PD10L)	2		
7	AN525-10R8	.SCREW	2		
8	AN743-12	.BRACKET	2		
9	MS27039-0816	.SCREW	6		
10	AN960PD8L	.WASHER (REPLACED BY AN960JD8L)	6		
10	AN960JD8L	.WASHER (REPLACES AN960PD8L)	6		
	206-070-470-003	.NOZZLE ASSY, LH	1		C
	206-070-470-007	.NOZZLE ASSY, LH	1		F
	206-070-470-004	.NOZZLE ASSY, RH	1		C
	206-070-470-008	.NOZZLE ASSY, RH	1		F
11	AN737TW98	.CLAMP	1		
12	206-075-356-013	.CABLE ASSY, LH	1		C
12	206-075-356-015	.CABLE ASSY, RH	1		C
13	YZ18H	.QUICK DISCONNECT	1		
		(ALTERNATE PART)			
13	320555	.QUICK DISCONNECT	1		
14	206-070-475-003	.BLOWER ASSY (REPLACED BY 206-070-475-005)	1		
14	206-070-475-005	.BLOWER ASSY (REPLACES 206-070-475-003)	1		
15	MS25082-5	.NUT	1		
16	AN936A516	.WASHER (REPLACED BY MS35333-41)	1		
16	MS35333-41	.WASHER (REPLACES AN936A516)	1		
17	AN960D516L	.WASHER	1		
18	40D1042	.FILTER	1		
19	MS35223-13	.SCREW	2		
20	15D023A056	.BEARING, BALL	2		
21	29D538-1	.MAGNET	2		
22	AN565D6H8	.SET SCREW	2		
23	206-070-471-001	.NOZZLE ASSY, LH (REPLACED BY 206-070-471-009)	1		C
23	206-070-471-002	.NOZZLE ASSY, RH (REPLACED BY 206-070-471-010)	1		C
24	206-070-471-009	.NOZZLE ASSY, LH (REPLACES 206-070-471-001)	1		
24	206-070-471-010	.NOZZLE ASSY, RH (REPLACES 206-070-471-002)	1		
25	MS35489-4	.GROMMET	1		C
26	60-001-3-12	.GROMMET	1		F
		(ALTERNATE PART)			
26	MS35489-7	.GROMMET	1		F
	206-031-134-001	AIR INDUCTION SYSTEM INSTL	1		
	206-031-134-003	AIR INDUCTION SYSTEM INSTL	1		

(1) INDEX NUMBER	(2) PART NUMBER	(3) ITEM NAME	(4) UNIT PER ASSY	(5) A V A I L	(6) U O C
		FIGURE: 21-1. Nozzle, windshield defog and air induction system installations (4 thru 253) (Cont'd)			
	206-031-134-005	AIR INDUCTION SYSTEM INSTL	1		
27	NAS679A3	.NUT (REPLACED BY MS21042L3)	4		
27	MS21042L3	.NUT (REPLACES NAS679A3)	4		
28	MS27039-1-09	.SCREW	4		
29	AN735D32	.CLAMP	4		
30	NAS679A3	.NUT (REPLACED BY MS21042L3)	4		
30	MS21042L3	.NUT (REPLACES NAS679A3)	4		
31	AN960PD10L	.WASHER (REPLACED BY AN960JD10L)	4		
31	AN960JD10L	.WASHER (REPLACES AN960PD10L)	4		
32	MS27039-1-08	.SCREW	4		
33	206-031-134-015	.CUSHION	2		
34	206-031-134-017	.CLAMP	2		
35	MS27039-1-10	.SCREW	2		
36	AN960PD10L	.WASHER (REPLACED BY AN960JD10L)	2		
36	AN960JD10L	.WASHER (REPLACES AN960PD10L)	2		
37	MS25281-32	.CLAMP (REPLACED BY MS25281R32)	2		
37	MS25281R32	.CLAMP (REPLACES MS25281-32)	2		
38	70-004A8F54Z2	.DUCT	2		
39	MS27039-1-08	.SCREW	8		
40	AN960PD10L	.WASHER (REPLACED BY AN960JD10L)	8		
40	AN960JD10L	.WASHER (REPLACES AN960PD10L)	8		
41	204-072-465-001	.VALVE ASSY	4		A
41	9977009-4	.VALVE ASSY	4		D
42	AN565B6H6	..SETSCREW	2		
43	204-072-463-001	..BUTTERFLY (USBL ON 206-072-465-001)	1		A
43	0110002	..BUTTERFLY (USBL ON 9977009-4)	1		D
44	204-072-464-001	..SOCKET (USBL ON 206-072-465-001)	1		A
44	0141007	..MOUNTING PLATE (USBL ON 9977009-4)	1		D
45	204-072-199-001	..SPRING (USBL ON 204-072-465-001)	1		A
45	6226002	..SPRING (USBL ON 9977009-4)	1		D
46	204-072-462-001	..BALL (USBL ON 204-072-465-001)	1		A
46	0106004	..BALL (USBL ON 9977009-4)	1		D
47	206-031-132-001	.SCOOP ASSY	1		A
47	206-031-132-003	.SCOOP ASSY	1		E
48	206-031-132-005	.SCOOP ASSY	1		E
48	NAS697A3	..NUTPLATE (REPLACED BY MS21069L3) (USBL ON	8		B
		206-031-132-001 AND -003)			
48	MS21069L3	..NUTPLATE (REPLACES NAS697A3) (USBL ON	8		B
		206-031-132-001 AND -003)			
48	NAS1474A3	..NUTPLATE (USBL ON 206-031-132-005)	8		E
49	NAS679A3	.NUT (REPLACED BY MS21042L3)	8		
49	MS21042L3	.NUT (REPLACES NAS679A3)	8		
50	AN960PD10L	.WASHER (REPLACED BY AN960JD10L)	8		
50	AN960JD10L	.WASHER (REPLACES AN960PD10L)	8		
51	MS27039-1-18	.SCREW	8		A
51	MS27039-1-24	.SCREW	8		D
52	206-031-133-001	.ELBOW	2		A
52	206-031-133-003	.ELBOW	2		D

(1) INDEX NUMBER	(2) PART NUMBER	(3) ITEM NAME	(4) UNIT PER ASSY	(5) A V A I L	(6) U O C																					
		<p>FIGURE: 21-1. Nozzle, windshield defog and air induction system installations (4 thru 253) (Cont'd)</p> <p style="text-align: center;">USABLE ON CODES</p> <table border="0" style="margin-left: auto; margin-right: auto;"> <thead> <tr> <th style="text-align: left;">CODE</th> <th style="text-align: left;">MODEL</th> <th style="text-align: left;">SERIAL NUMBER</th> </tr> </thead> <tbody> <tr> <td>A</td> <td>206A</td> <td>4-53</td> </tr> <tr> <td>B</td> <td>206A</td> <td>4-153</td> </tr> <tr> <td>C</td> <td>206A</td> <td>4-203</td> </tr> <tr> <td>D</td> <td>206A</td> <td>54-253</td> </tr> <tr> <td>E</td> <td>206A</td> <td>154-253</td> </tr> <tr> <td>F</td> <td>206A</td> <td>204-253</td> </tr> </tbody> </table> <p>1) UNLESS A USABLE ON PART NUMBER IS LISTED IN THE ITEM NAME COLUMN; NO CODE INDICATES THE PART APPLIES TO ALL SERIAL NUMBERS.</p> <p>2) IF THE SERIAL NUMBER IS BLANK THE PART APPLIES TO ALL SERIAL NUMBERS FOR THAT MODEL.</p>	CODE	MODEL	SERIAL NUMBER	A	206A	4-53	B	206A	4-153	C	206A	4-203	D	206A	54-253	E	206A	154-253	F	206A	204-253			
CODE	MODEL	SERIAL NUMBER																								
A	206A	4-53																								
B	206A	4-153																								
C	206A	4-203																								
D	206A	54-253																								
E	206A	154-253																								
F	206A	204-253																								



206A/B/B3-21-1002
C0000

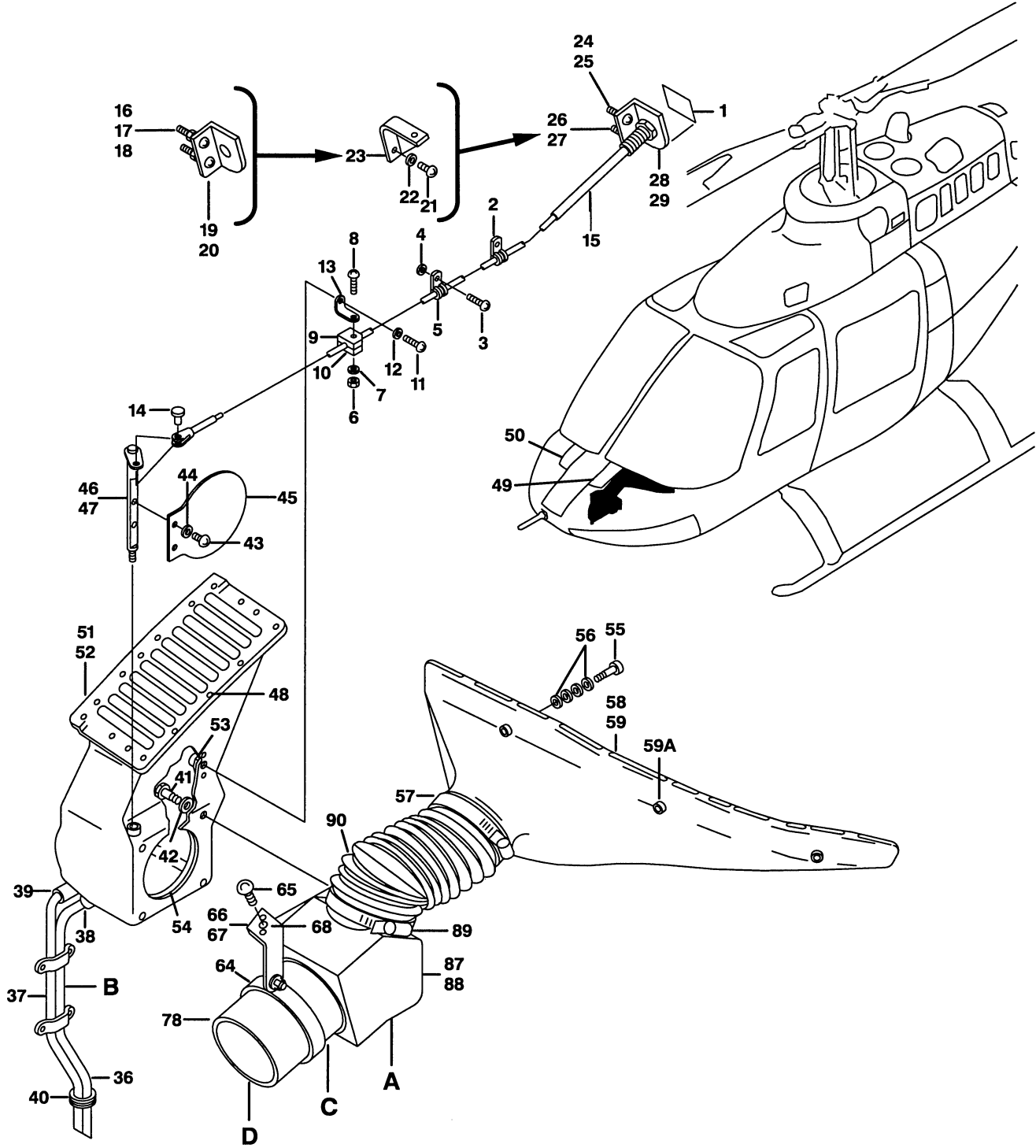
Figure 21-2. Ventilation system and defog installation, ram air (254 thru 448)

(1) INDEX NUMBER	(2) PART NUMBER	(3) ITEM NAME	(4) UNIT PER ASSY	(5) A V A I L	(6) U O C
		FIGURE: 21-2. Ventilation system and defog installation, ram air (254 thru 448)			
	206-070-480-001	VENTILATION SYSTEM AND DEFOG INSTL, RAM AIR	1		
	206-070-480-003	VENTILATION SYSTEM AND DEFOG INSTL, RAM AIR	1		
1	206-070-484-001	.DECAL	2		
2	MS21919DG3	.CLAMP (REPLACED BY MS21919WDG3)	2		
2	MS21919WDG3	.CLAMP (REPLACES MS21919DG3)	2		
3	NAS679A3	.NUT (REPLACED BY MS21042L3)	2		
3	MS21042L3	.NUT (REPLACES NAS679A3)	2		
4	AN960PD10L	.WASHER (REPLACED BY AN960JD10L)	2		
4	AN960JD10L	.WASHER (REPLACES AN960PD10L)	2		
5	AN520-10R20	.SCREW (REPLACED BY MS35207-268)	2		
5	MS35207-268	.SCREW (REPLACES AN520-10R20)	2		
6	204-070-972-003	.CLAMP (REPLACED BY 30-053-3)	2		
6	30-053-3	.CLAMP (REPLACES 204-070-972-003)	2		
7	204-070-972-004	.CLAMP (REPLACED BY 30-053-4)	2		
7	30-053-4	.CLAMP (REPLACES 204-070-972-004)	2		
8	NAS43DD3-10	.SPACER	2		
9	AN520-10R7	.SCREW (REPLACED BY MS35207-262)	2		
9	MS35207-262	.SCREW (REPLACES AN520-10R7)	2		
10	AN960PD10L	.WASHER (REPLACED BY AN960JD10L)	2		
10	AN960JD10L	.WASHER (REPLACES AN960PD10L)	2		
11	20-032-1	.BRACKET	1		
12	MS20392-2C9	.PIN (REPLACED BY MS20392-2S9)	2		
12	MS20392-2S9	.PIN (REPLACES MS20392-2C9)	2		
13	47-733-191-3	.CONTROL CABLE, CONTROL	2		
14	NAS679A3	.NUT (REPLACED BY MS21042L3)	2		
14	MS21042L3	.NUT (REPLACES NAS679A3)	2		
15	AN960PD10L	.WASHER (REPLACED BY AN960JD10L)	4		
15	AN960JD10L	.WASHER (REPLACES AN960PD10L)	4		
16	AN520-10R10	.SCREW (REPLACED BY MS35207-264)	2		
16	MS35207-264	.SCREW (REPLACES AN520-10R10)	2		
17	206-070-487-001	.BRACKET, LH	1		
18	206-070-487-002	.BRACKET, RH	1		
19	140-001-1	.WASHER	12		
20	206-070-482-001	.GRILL, LH	1		
21	206-070-482-003	.GRILL, RH	1		
22	AN520-10R7	.SCREW (REPLACED BY MS35207-262)	6		
22	MS35207-262	.SCREW (REPLACES AN520-10R7)	6		
23	AN960PD10L	.WASHER (REPLACED BY AN960JD10L)	6		
23	AN960JD10L	.WASHER (REPLACES AN960PD10L)	6		
24	20-032-1	.BRACKET	1		
25	206-070-476-013	.PLENUM ASSY, LH (NOTE 1)	1		
26	206-070-476-015	.PLENUM ASSY, RH (NOTE 2)	1		
27	NAS679A3	.NUT (REPLACED BY MS21042L3)	2		
27	MS21042L3	.NUT (REPLACES NAS679A3)	2		
28	AN970-3	.WASHER	4		
29	AN520-10R26	.SCREW	2		
30	AN960PD10L	.WASHER (REPLACED BY AN960JD10L)	2		
30	AN960JD10L	.WASHER (REPLACES AN960PD10L)	2		
31	NAS43DD3-72	.SPACER	2		

(1) INDEX NUMBER	(2) PART NUMBER	(3) ITEM NAME	(4) UNIT PER ASSY	(5) A V A I L	(6) U O C
FIGURE: 21-2. Ventilation system and defog installation, ram air (254 thru 448) (Cont'd)					
32	MS21919WDG8	.CLAMP	2		
33	206-070-480-025	.HOSE	2		
34	206-070-480-027	.HOSE	2		
35	206-070-480-029	.HOSE	2		
36	206-070-486-001	.ADAPTER ASSY	2		
37	MS35489-17	.GROMMET	2		
38	AN3-4A	.BOLT	8		
39	AN960PD10L	.WASHER (REPLACED BY AN960JD10L)	8		
39	AN960JD10L	.WASHER (REPLACES AN960PD10L)	8		
40	206-070-477-005	.VALVE ASSY, LH	1		A
40	206-070-477-003	.VALVE ASSY, LH	1		B
41	206-070-477-006	.VALVE ASSY, RH	1		A
41	206-070-477-004	.VALVE ASSY, RH	1		B
42	AN520-6R4	..SCREW (REPLACED BY MS35207-226)	2		
42	MS35207-226	..SCREW (REPLACES AN520-6R4)	2		
43	206-070-481-001	..FLAPPER	1		A
43	206-070-372-001	..FLAPPER	1		B
44	AN320-3	..NUT	1		
45	B0375-020	..WASHER, BELLEVILLE	2		
46	AN960PD10L	..WASHER (REPLACED BY AN960JD10L)	1		
46	AN960JD10L	..WASHER (REPLACES AN960PD10L)	1		
47	MS29513-008	..PACKING, PREFORMED	1		A
48	206-070-479-001	..SHAFT ASSY, LH	1		
48	206-070-479-002	..SHAFT ASSY, RH	1		
49	NAS620A10L	..WASHER	1		
50	206-070-478-011	..DUCT ASSY, LH (NOTE 1)	1		B
50	206-070-478-007	..DUCT ASSY, LH (NOTE 1)	1		A
50	206-070-478-008	..DUCT ASSY, RH (NOTE 2)	1		A
50	206-070-478-012	..DUCT ASSY, RH (NOTE 2)	1		B
51	NAS698A3	..NUTPLATE (REPLACED BY MS21073L3)	2		
51	MS21073L3	..NUTPLATE (REPLACES NAS698A3)	2		
52	NAS697A3	..NUTPLATE (REPLACED BY MS21069L3)	2		
52	MS21069L3	..NUTPLATE (REPLACES NAS697A3)	2		
53	MS28775-337	..PACKING, PREFORMED, PREFORMED	1		A
53	206-070-371-003	..GASKET	1		B
54	AN737TW107	.CLAMP	2		
55	MS27039-0819	.SCREW	6		
56	AN960PD8L	.WASHER (REPLACED BY AN960JD8L)	24		
56	AN960JD8L	.WASHER (REPLACES AN960PD8L)	24		
57	206-070-471-005	.NOZZLE ASSY, LH	1		
58	206-070-471-006	.NOZZLE ASSY, RH	1		
59	NAS679A3	.NUT (REPLACED BY MS21042L3)	2		
59	MS21042L3	.NUT (REPLACES NAS679A3)	2		
60	AN960PD10L	.WASHER (REPLACED BY AN960JD10L)	2		
60	AN960JD10L	.WASHER (REPLACES AN960PD10L)	2		
61	AN520-10R10	.SCREW (REPLACED BY MS35207-264)	2		
61	MS35207-264	.SCREW (REPLACES AN520-10R10)	2		
62	TA731D46	.CLAMP (REPLACED BY 30-074-1)	2		
62	30-074-1	.CLAMP (REPLACES TA731D46)	2		

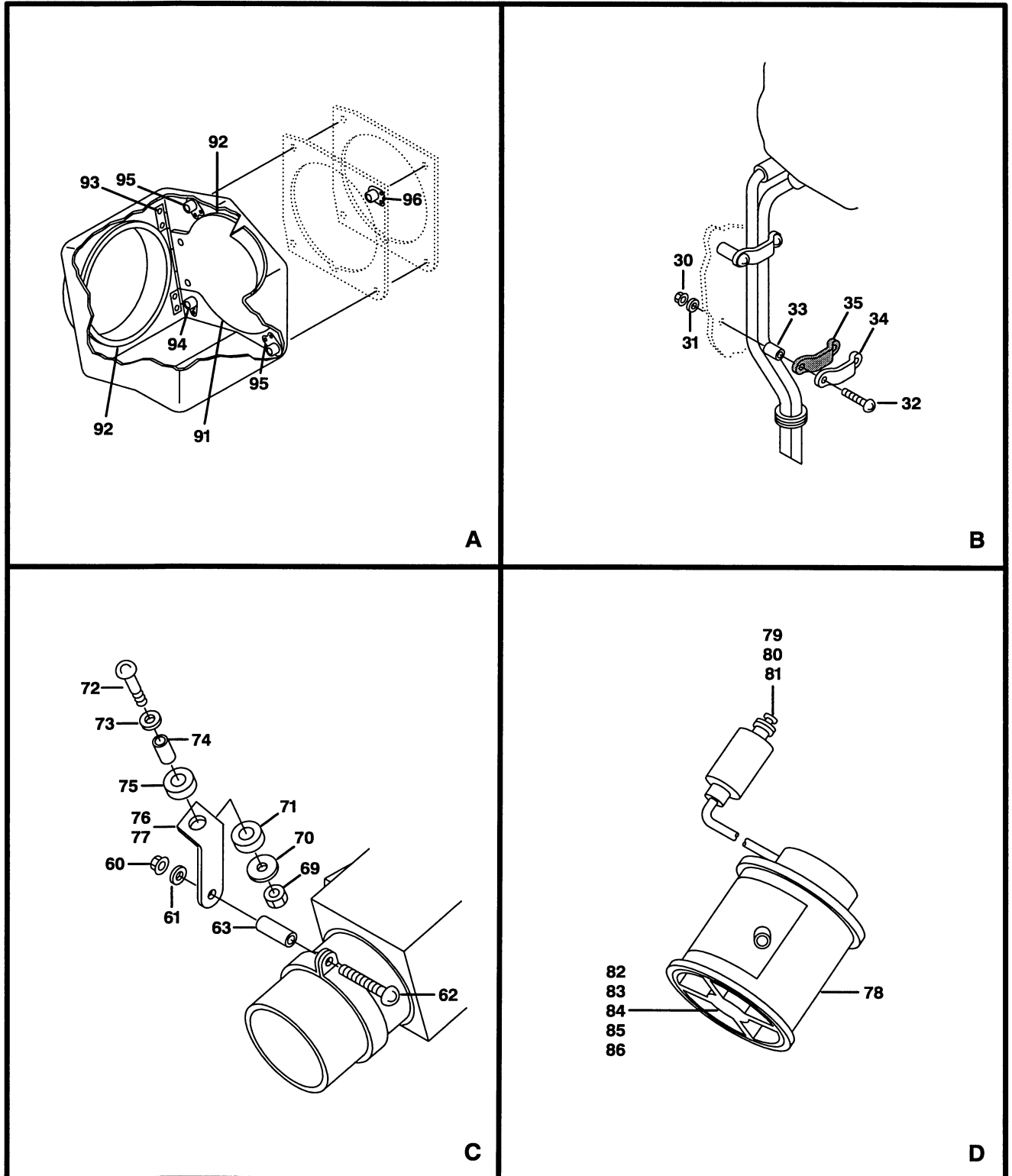
(1) INDEX NUMBER	(2) PART NUMBER	(3) ITEM NAME	(4) UNIT PER ASSY	(5) A V A I L	(6) U O C
FIGURE: 21-2. Ventilation system and defog installation, ram air (254 thru 448) (Cont'd)					
63	AN520-10R8	.SCREW (REPLACED BY MS35207-263)	2		
63	MS35207-263	.SCREW (REPLACES AN520-10R8)	2		
64	206-070-485-001	.CLIP, LH	1		
65	206-070-485-003	.CLIP, RH	1		
66	NAS679A3	..NUT (REPLACED BY MS21042L3)	1		
66	MS21042L3	..NUT (REPLACES NAS679A3)	1		
67	206-070-475-003	.BLOWER ASSY (REPLACED BY 206-070-475-005)	2		
67	206-070-475-005	.BLOWER ASSY (REPLACES 206-070-475-003) (ALTERNATE PART)	2		
67	206-070-475-007	.BLOWER ASSY	2		
68	MS25082-5	..NUT	1		
69	MS35333-41	..WASHER	1		
70	AN960D516L	..WASHER	1		
71	40D1042	..FILTER	1		
72	MS35223-13	..SCREW	2		
73	15D023A056	..BEARING, BALL	2		
74	29D538-1	..MAGNET	2		
75	AN565D6H8	..SET SCREW	2		
76	206-070-483-001	.PLENUM ASSY, LH (REPLACED BY 206-070-483-011)	1		A
76	206-070-483-011	.PLENUM ASSY, LH (REPLACES 206-070-483-001)	1		C
77	206-070-483-002	.PLENUM ASSY, RH (REPLACED BY 206-070-483-012)	1		A
77	206-070-483-012	.PLENUM ASSY, RH (REPLACES 206-070-483-002)	1		C
78	AN737TW107	..CLAMP	1		
79	NAS1374A12CA015	..HOSE (REPLACED BY NAS1375A12CA015)	1		
79	NAS1375A12CA015	..HOSE (REPLACES NAS1374A12CA015)	1		
80	206-070-488-001	..FLAPPER ASSY	1		A
80	206-070-373-001	..FLAPPER ASSY	1		C
81	206-070-483-021	..GASKET	1		A
82	206-070-371-001	..GASKET	2		C
83	NAS698A3	..NUTPLATE (REPLACED BY MS21073L3)	2		
83	MS21073L3	..NUTPLATE (REPLACES NAS698A3)	2		
84	NAS698A3	..NUTPLATE (REPLACED BY MS21073L3)	2		A
84	MS21073L3	..NUTPLATE (REPLACES NAS698A3)	2		A
85	NAS696A3	..NUTPLATE (REPLACED BY MS21071L3)	1		C
85	MS21071L3	..NUTPLATE (REPLACES NAS696A3)	1		C
86	206-070-483-115	..SHIM	2		C
<p>NOTE 1: P/N'S 206-070-476-013, 206-070-478-007 AND -011 AS AN ASSEMBLY ARE REPLACED BY 206-070-383-001 SEE FIG 21-3 FOR DETAILS</p> <p>NOTE 2: P/N'S 206-070-476-015, 206-070-478-008 AND -012 AS AN ASSEMBLY ARE REPLACED BY 206-070-383-003 SEE FIG 21-3 FOR DETAILS</p>					

(1) INDEX NUMBER	(2) PART NUMBER	(3) ITEM NAME	(4) UNIT PER ASSY	(5) A V A I L	(6) U O C												
		<p>FIGURE: 21-2. Ventilation system and defog installation, ram air (254 thru 448) (Cont'd)</p> <p style="text-align: center;">USABLE ON CODES</p> <table border="0" style="margin-left: auto; margin-right: auto;"> <thead> <tr> <th style="text-align: left;">CODE</th> <th style="text-align: left;">MODEL</th> <th style="text-align: left;">SERIAL NUMBER</th> </tr> </thead> <tbody> <tr> <td>A</td> <td>206A</td> <td>254-413</td> </tr> <tr> <td>B</td> <td>206A</td> <td>414-448</td> </tr> <tr> <td>C</td> <td>206A</td> <td>254-448</td> </tr> </tbody> </table> <p>1) UNLESS A USABLE ON PART NUMBER IS LISTED IN THE ITEM NAME COLUMN; NO CODE INDICATES THE PART APPLIES TO ALL SERIAL NUMBERS.</p> <p>2) IF THE SERIAL NUMBER IS BLANK THE PART APPLIES TO ALL SERIAL NUMBERS FOR THAT MODEL.</p>	CODE	MODEL	SERIAL NUMBER	A	206A	254-413	B	206A	414-448	C	206A	254-448			
CODE	MODEL	SERIAL NUMBER															
A	206A	254-413															
B	206A	414-448															
C	206A	254-448															



206A/B/B3-21-1003-1
C0001

Figure 21-3. Ventilation system and defog installation, ram air (449 thru 2488) (Sheet 1 of 2)



206A/B/B3-21-1003-2
C0001

Figure 21-3. Ventilation system and defog installation, ram air (449 thru 2488) (Sheet 2)

(1) INDEX NUMBER	(2) PART NUMBER	(3) ITEM NAME	(4) UNIT PER ASSY	(5) A V A I L	(6) U O C
		FIGURE: 21-3. Ventilation system and defog installation, ram air (449 thru 2488)			
	206-070-480-005	VENTILATION SYSTEM AND DEFOG INSTL, RAM AIR	1		
	206-070-480-007	VENTILATION SYSTEM AND DEFOG INSTL, RAM AIR	1		
	206-070-480-009	VENTILATION SYSTEM AND DEFOG INSTL, RAM AIR	1		
	206-070-480-011	VENTILATION SYSTEM AND DEFOG INSTL, RAM AIR	1		
1	206-070-484-001	.DECAL (VENT)	2	1	A
1	206-070-670-001	.DECAL (VENT)	2	1	E
2	MS21919DG3	.CLAMP (REPLACED BY MS21919WDG3)	2		B
2	MS21919WDG3	.CLAMP (REPLACES MS21919DG3)	2	1	B
3	MS27039-1-08	.SCREW	2	1	F
4	AN960JD10L	.WASHER (REPLACED BY NAS1149D0332J)	2		F
4	NAS1149D0332J	.WASHER (REPLACES AN960JD10L)	2		F
5	MS21919WDG3	.CLAMP	2	1	F
6	NAS679A3	.NUT (REPLACED BY MS21042L3)	2		
6	MS21042L3	.NUT (REPLACES NAS679A3)	2	1	
7	AN960JD10L	.WASHER (REPLACED BY NAS1149D0332J)	2		
7	NAS1149D0332J	.WASHER (REPLACES AN960JD10L)	2		
8	AN520-10R12	.SCREW (REPLACED BY MS35207-265)	2		
8	MS35207-265	.SCREW (REPLACES AN520-10R12)	2	1	
9	204-070-972-003	.CLAMP (REPLACED BY 30-053-3)	2		
9	30-053-3	.CLAMP (REPLACES 204-070-972-003)	2	1	
10	204-070-972-004	.CLAMP (REPLACED BY 30-053-4)	2		
10	30-053-4	.CLAMP (REPLACES 204-070-972-004)	2	1	
11	AN520-10R8	.SCREW (REPLACED BY MS35207-263)	2		
11	MS35207-263	.SCREW (REPLACES AN520-10R8)	2	1	
12	AN960JD10L	.WASHER (REPLACED BY NAS1149D0332J)	2		
12	NAS1149D0332J	.WASHER (REPLACES AN960JD10L)	2		
13	20-032-1	.BRACKET	2	1	
14	MS20392-2C9	.PIN (REPLACED BY MS20392-2S9)	2	0	
14	MS20392-2S9	.PIN (REPLACES MS20392-2C9)	2	1	
15	047-733-191-003	.CONTROL CABLE	2	1	A
15	047-733-191-019	.CONTROL CABLE	2	1	E
16	NAS679A3	.NUT (REPLACED BY MS21042L3)	2		A
16	MS21042L3	.NUT (REPLACES NAS679A3)	2	1	A
17	AN960PD10L	.WASHER (REPLACED BY AN960JD10L)	4		A
17	AN960JD10L	.WASHER (REPLACES AN960PD10L) (REPLACED BY NAS1149D0332J)	4		A
17	NAS1149D0332J	.WASHER (REPLACES AN960JD10L)	4		A
18	AN520-10R10	.SCREW (REPLACED BY MS35207-264)	2	0	A
18	MS35207-264	.SCREW (REPLACES AN520-10R10)	2	1	A
19	206-070-487-001	.BRACKET, LH	1	1	A
20	206-070-487-002	.BRACKET, RH	1	6	A
21	AN520-10R10	.SCREW (REPLACED BY MS35207-264)	2	0	C
21	MS35207-264	.SCREW (REPLACES AN520-10R10)	2	1	C
22	AN960PD10L	.WASHER (REPLACED BY AN960JD10L)	2		C
22	AN960JD10L	.WASHER (REPLACES AN960PD10L) (REPLACED BY NAS1149D0332J)	2		C
22	NAS1149D0332J	.WASHER (REPLACES AN960JD10L)	2		C
23	206-070-594-001	.BRACKET	2	1	C
24	MS27039-1-09	.SCREW	2	1	F

(1) INDEX NUMBER	(2) PART NUMBER	(3) ITEM NAME	(4) UNIT PER ASSY	(5) A V A I L	(6) U O C
FIGURE: 21-3. Ventilation system and defog installation, ram air (449 thru 2488) (Cont'd)					
25	AN960JD10L	.WASHER (REPLACED BY NAS1149D0332J)	2		F
25	NAS1149D0332J	.WASHER (REPLACES AN960JD10L)	2		F
26	50-013-11	.STUD	2	1	F
27	50-044-3	.WASHER	2	1	F
28	206-073-114-001	.BRACKET, LH	1		F
29	206-073-114-002	.BRACKET, RH	1		F
30	NAS679A3	.NUT (REPLACED BY MS21042L3)	8		
30	MS21042L3	.NUT (REPLACES NAS679A3)	8	1	
31	AN960JD10L	.WASHER (REPLACED BY NAS1149D0332J)	8		
31	NAS1149D0332J	.WASHER (REPLACES AN960JD10L)	8		
32	AN520-10R8	.SCREW (REPLACED BY MS35207-263)	8		
32	MS35207-263	.SCREW (REPLACES AN520-10R8)	8	1	
33	NAS43DD3-7	.SPACER	8	6	
34	206-070-379-003	.CLAMP	4	1	
35	206-070-381-001	.CUSHION	4	1	
36	206-070-394-001	.TUBE, LH	1	1	
36A	206-070-393-001	.TUBE, RH	1	1	
37	206-070-396-001	.TUBE, LH	1	1	
37A	206-070-395-001	.TUBE, RH	1	1	
38	206-070-480-033	.HOSE	2		
39	206-070-480-035	.HOSE	2		
40	MS35489-17	.GROMMET	2	1	
41	AN3-4A	.BOLT	8	1	
42	AN960JD10L	.WASHER (REPLACED BY NAS1149D0332J)	8		
42	NAS1149D0332J	.WASHER (REPLACES AN960JD10L)	8		
43	AN520-6R4	.SCREW (REPLACED BY MS35207-226)	4	0	
43	MS35207-226	.SCREW (REPLACES AN520-6R4)	4	1	
44	MS35338-41	.WASHER	4	1	
45	206-070-372-001	.FLAPPER	2	1	
46	206-070-384-001	.SHAFT ASSY, LH	1	1	
47	206-070-384-002	.SHAFT ASSY, RH	1	1	
48	140-001-1	.WASHER	12	1	
49	206-070-482-001	.GRILL, LH	1		
50	206-070-482-003	.GRILL, RH	1		
51	206-070-383-001	.PLENUM, LH (NOTE 1)	1		
52	206-070-383-003	.PLENUM, RH (NOTE 2)	1		
53	NAS697A3	.NUTPLATE (REPLACED BY MS21069L3)	1		
53	MS21069L3	.NUTPLATE (REPLACES NAS697A3)	1	1	
54	206-070-371-003	.GASKET	1	1	
55	MS27039-0816	.SCREW	6	1	
56	AN960JD8L	.WASHER (REPLACED BY NAS1149DN816J)	24	1	
56	NAS1149DN816J	.WASHER (REPLACES AN960JD8L)	24		
57	AN737TW107	.CLAMP	2	1	
58	206-070-471-005	.NOZZLE ASSY, LH	1	1	
59	206-070-471-006	.NOZZLE ASSY, RH	1	1	
59A	NAS43DD3-48	.SPACER (REPLACED BY NAS43DD3-48N)	3		
59A	NAS43DD3-48N	.SPACER (REPLACES NAS43DD3-48)	3	1	
60	NAS679A3	.NUT (REPLACED BY MS21042L3)	2		
60	MS21042L3	.NUT (REPLACES NAS679A3)	2	1	

(1) INDEX NUMBER	(2) PART NUMBER	(3) ITEM NAME	(4) UNIT PER ASSY	(5) A V A I L	(6) U O C
		FIGURE: 21-3. Ventilation system and defog installation, ram air (449 thru 2488) (Cont'd)			
61	AN960JD10L	.WASHER (REPLACED BY NAS1149D0332J)	2		
61	NAS1149D0332J	.WASHER (REPLACES AN960JD10L)	2		
62	MS35207-266	.SCREW	2	1	
63	NAS43DD3-20	.SPACER	2		
64	TA731D46	.CLAMP (REPLACED BY 30-074-1)	2		
64	30-074-1	.CLAMP (REPLACES TA731D46)	2	1	
65	AN520-10R7	.SCREW (REPLACED BY MS35207-262)	2		C
65	MS35207-262	.SCREW (REPLACES AN520-10R7)	2	1	C
66	206-070-485-001	.CLIP, LH	1	1	C
67	206-070-485-003	.CLIP, RH	1	1	C
68	NAS679A3	.NUT (REPLACED BY MS21042L3)	1		
68	MS21042L3	.NUT (REPLACES NAS679A3)	1	1	
69	MS21042L3	.NUT	2	1	G
70	AN970-3	.WASHER	2	1	G
71	WR1-030	.RING	2	1	G
72	MS27039-1-16	.SCREW	1	1	G
73	AN960JD10L	.WASHER (REPLACED BY NAS1149D0332J)	1		G
73	NAS1149D0332J	.WASHER (REPLACES AN960JD10L)	1		G
74	NAS43DD3-32N	.SPACER	2	1	G
75	WB1-030	.BUSHING	2	1	G
76	206-070-485-009	.CLIP, LH	1	1	G
77	206-070-485-011	.CLIP, RH	1	1	G
78	206-070-475-001	.BLOWER ASSY (REPLACED BY 206-070-475-003 AND -005)	2		
78	206-070-475-003	.BLOWER ASSY (REPLACES 206-070-475-001) (REPLACED BY 206-070-475-005)	2		
78	206-070-475-005	.BLOWER ASSY (REPLACES 206-070-475-001 AND 206-070-475-003) (ALTERNATE PART)	2	1	
78	206-070-475-007	.BLOWER ASSY	2	0	
79	MS25082-5	.NUT	1	1	
80	MS35333-41	.WASHER	1	1	
81	AN960D516L	.WASHER (REPLACED BY NAS1149D0516H)	1	1	
81	NAS1149D0516H	.WASHER (REPLACES AN960D516L)	1		
82	40D1042	.FILTER	1	1	
83	MS35223-13	.SCREW	2		
84	15D023A056	.BEARING, BALL	2	6	
85	29D538-1	.MAGNET	2	6	
86	AN565D6H8	.SETSCREW	2		
87	206-070-483-011	.PLENUM ASSY, LH	1	1	
88	206-070-483-012	.PLENUM ASSY, RH	1	1	
89	AN737TW107	.CLAMP	1	1	
90	NAS1374A12CA015	.HOSE (REPLACED BY NAS1375A12CA015)	1		
90	NAS1375A12CA015	.HOSE (REPLACES NAS1374A12CA015)	1		
91	206-070-373-001	.FLAPPER ASSY	1		
92	206-070-371-001	.GASKET	1		
93	AN960PD3L	.WASHER (REPLACED BY 206-070-483-115) (REPLACED BY AN960JD3L)	8		

(1) INDEX NUMBER	(2) PART NUMBER	(3) ITEM NAME	(4) UNIT PER ASSY	(5) A V A I L	(6) U O C																								
FIGURE: 21-3. Ventilation system and defog installation, ram air (449 thru 2488) (Cont'd)																													
93	AN960JD3L	..WASHER (REPLACED BY 206-070-483-115) (REPLACES AN960PD3L) (REPLACED BY NAS1149DN316J)	8																										
93	NAS1149DN316J	..WASHER (REPLACED BY 206-070-483-115) (REPLACES AN960JD3L)	8																										
93	206-070-483-115	..SHIM (REPLACES AN960PD3L)	2																										
94	NAS696A3	..NUTPLATE (REPLACED BY MS21071L3)	1																										
94	MS21071L3	..NUTPLATE (REPLACES NAS696A3)	1	1																									
95	NAS698A3	..NUTPLATE (REPLACES BY MS21073L3)	2	0																									
95	MS21073L3	..NUTPLATE (REPLACES NAS698A3)	2	1																									
96	NAS679A3	.NUT (REPLACED BY MS21042L3)	2																										
96	MS21042L3	.NUT (REPLACES NAS679A3)	2	1																									
<p>NOTE 1: P/N 206-070-383-001 REPLACES 206-070-476-013, 206-070-478-007 AND -011 (FIG 21-2) AS AN ASSEMBLY</p> <p>NOTE 2: P/N 206-070-383-003 REPLACES 206-070-475-015, 206-070-478-008 AND -012 (FIG 21-2) AS AN ASSEMBLY</p>																													
USABLE ON CODES																													
<table border="0" style="width: 100%;"> <thead> <tr> <th style="text-align: left;">CODE</th> <th style="text-align: left;">MODEL</th> <th style="text-align: left;">SERIAL NUMBER</th> </tr> </thead> <tbody> <tr> <td>A</td> <td>206A</td> <td>449-583</td> </tr> <tr> <td>B</td> <td>206A/B</td> <td>449-913</td> </tr> <tr> <td>C</td> <td>206A/B</td> <td>584-913</td> </tr> <tr> <td>D</td> <td>206A/B</td> <td>914-2211</td> </tr> <tr> <td>E</td> <td>206A/B/BIII</td> <td>584-2488</td> </tr> <tr> <td>F</td> <td>206B/BIII</td> <td>914-2488</td> </tr> <tr> <td>G</td> <td>206BIII</td> <td>2212-2488</td> </tr> </tbody> </table>						CODE	MODEL	SERIAL NUMBER	A	206A	449-583	B	206A/B	449-913	C	206A/B	584-913	D	206A/B	914-2211	E	206A/B/BIII	584-2488	F	206B/BIII	914-2488	G	206BIII	2212-2488
CODE	MODEL	SERIAL NUMBER																											
A	206A	449-583																											
B	206A/B	449-913																											
C	206A/B	584-913																											
D	206A/B	914-2211																											
E	206A/B/BIII	584-2488																											
F	206B/BIII	914-2488																											
G	206BIII	2212-2488																											
<p>1) UNLESS A USABLE ON PART NUMBER IS LISTED IN THE ITEM NAME COLUMN; NO CODE INDICATES THE PART APPLIES TO ALL SERIAL NUMBERS.</p> <p>2) IF THE SERIAL NUMBER IS BLANK THE PART APPLIES TO ALL SERIAL NUMBERS FOR THAT MODEL.</p>																													

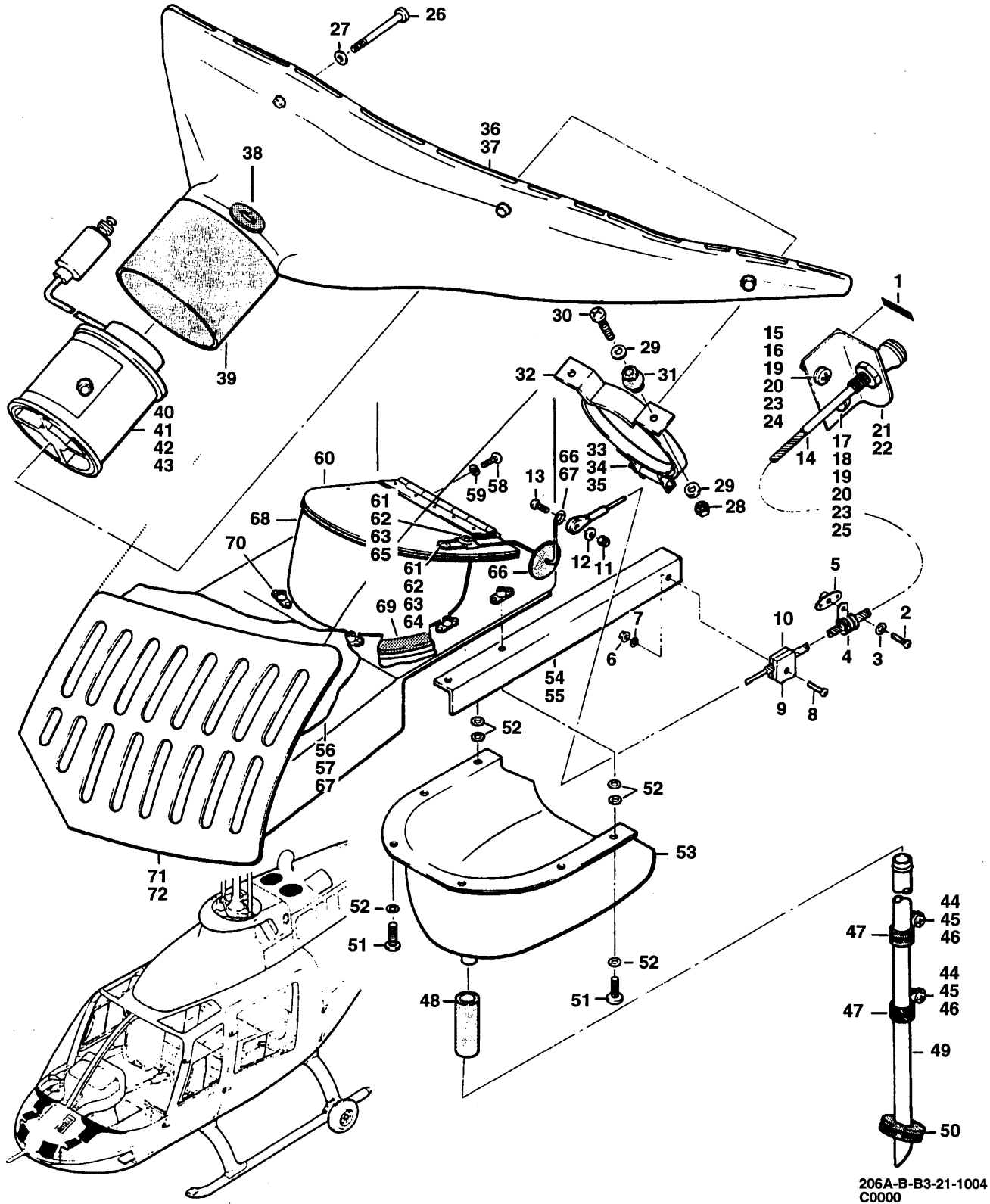


Figure 21-4. Ventilation system and defog installation, ram air (2489 thru sub)

(1) INDEX NUMBER	(2) PART NUMBER	(3) ITEM NAME	(4) UNIT PER ASSY	(5) A V A I L	(6) U O C
		FIGURE: 21-4. Ventilation system and defog installation, ram air (2489 thru sub)			
	206-073-170-003	VENT SYSTEM INSTL AND DEFOG INSTL, RAM AIR	1		
	206-073-170-101	VENT SYSTEM INSTL AND DEFOG INSTL, RAM AIR	1		
1	206-070-670-001	.DECAL (VENT)	2		
2	MS35207-263	.SCREW	2		
3	AN960PD10L	.WASHER (REPLACED BY AN960JD10L)	2		
3	AN960JD10L	.WASHER (REPLACES AN960PD10L)	2		
4	MS21919DG5	.CLAMP (REPLACED BY MS21919WDG5)	2		
4	MS21919WDG5	.CLAMP (REPLACES MS21919DG5)	2		
5	MS21069L3K	.NUTPLATE	2		
6	MS21042L3	.NUT	2		
7	AN960PD10L	.WASHER (REPLACED BY AN960JD10L)	2		
7	AN960JD10L	.WASHER (REPLACES AN960PD10L)	2		
8	MS35207-263	.SCREW	2		
9	30-053-3	.CLAMP	2		
10	30-053-4	.CLAMP	2		
11	MS21042L3	.NUT	2		
12	AN960PD10L	.WASHER (REPLACED BY AN960JD10L)	2		
12	AN960JD10L	.WASHER (REPLACES AN960PD10L)	2		
13	MS35207-263	.SCREW	2		
14	047-733-191-003	.CONTROL	2		
15	MS27039-1-09	.SCREW	2		A
16	AN960PD10L	.WASHER (REPLACED BY AN960JD10L)	2		A
16	AN960JD10L	.WASHER (REPLACES AN960PD10L)	2		A
17	50-044-3	.WASHER (NOTE 1)	2		A
18	50-013-11	.STUD (NOTE 1)	2		A
19	MS27039-1-10	.SCREW (NOTE 2)	4		C
20	AN960JD10L	.WASHER (NOTE 2)	4		C
21	206-073-114-001	.BRACKET, LH (REPLACED BY 206-073-114-105)	1		A
21	206-073-114-101	.BRACKET ASSY, LH	1		B
21	206-073-114-105	.BRACKET, LH (REPLACES 206-073-114-001)	1		C
22	206-073-114-002	.BRACKET, RH (REPLACED BY 206-073-114-106)	1		A
22	206-073-114-102	.BRACKET ASSY, RH	1		B
22	206-073-114-106	.BRACKET, RH (REPLACES 206-073-114-002)	1		C
23	50-079-4	.RETAINER	2		B
24	50-079-1-8	.STUD ASSY	1		B
25	50-079-1-7	.STUD ASSY	1		B
26	MS27039-0819	.SCREW	6		
27	AN960JD8L	.WASHER	6		
28	MS21042L3	.NUT	4		
29	AN960PD10L	.WASHER (REPLACED BY AN960JD10L)	8		
29	AN960JD10L	.WASHER (REPLACES AN960PD10L)	8		
30	MS27039-1-14	.SCREW	4		
31	206-073-173-001	.MOUNT	4		
32	206-073-172-001	.CLAMP	2		
33	MS21042L3	.NUT	1		
34	AN960-10L	.WASHER	1		
35	MS35207-268	.SCREW	1		
36	206-070-471-009	.NOZZLE ASSY, LH	1		
37	206-070-471-010	.NOZZLE ASSY, RH	1		

(1) INDEX NUMBER	(2) PART NUMBER	(3) ITEM NAME	(4) UNIT PER ASSY	(5) A V A I L	(6) U O C
		FIGURE: 21-4. Ventilation system and defog installation, ram air (2489 thru sub) (Cont'd)			
38	60-001-3-12	..GROMMET (ALTERNATE PART)	1		
38	MS35489-7	..GROMMET	1		
39	NAS521-24-9	..COUPLING	1		
40	206-073-913-001	..BLOWER (ALTERNATE PART)	2		
40	206-073-913-003	..BLOWER	2		
41	27D1482	..IMPELLER (USBL ON 206-073-913-001)	1		
42	29D538-1	..MAGNET (USBL ON 206-073-913-001)	2		
43	15D033A056	..BEARING, BALL (USBL ON 206-073-913-001)	1		
44	MS21042L3	..NUT	4		
45	AN960PD10L	..WASHER (REPLACED BY AN960JD10L)	4		
45	AN960JD10L	..WASHER (REPLACES AN960PD10L)	4		
46	MS35207-263	..SCREW	4		
47	MS21919DG5	..CLAMP (REPLACED BY MS21919WDG5)	4		
47	MS21919WDG5	..CLAMP (REPLACES MS21919DG5)	4		
48	110-107-14D-013	..TUBE	2		
49	206-070-981-001	..TUBE, VENT SYSTEM, LH	1		
49	206-070-982-001	..TUBE ASSY, RH (REPLACED BY 206-073-983-101)	1		
49	206-073-983-101	..TUBE, VENT SYSTEM, RH (REPLACES 206-073-982-001)	1		
50	MS35489-41	..GROMMET	2		
51	MS35206-245	..SCREW	12		
52	AN960JD8L	..WASHER (NOTE 3)	20		
53	206-070-939-001	..TURN VANE	2		
54	206-070-943-001	..BRACKET, LH	1		
55	206-070-943-002	..BRACKET, RH	1		
56	206-070-937-009	..PLENUM ASSY, LH	1		
57	206-070-937-011	..PLENUM ASSY, RH	1		
58	MS35206-244	..SCREW	2		
59	AN960JD8L	..WASHER	2		
60	206-070-936-001	..FLAPPER ASSY, LH	1		
60	206-070-936-002	..FLAPPER ASSY, RH	1		
61	NAS679A3	..NUT (REPLACED BY MS21042L3)	2		
61	MS21042L3	..NUT (REPLACES NAS679A3)	2		
62	AN960PD10L	..WASHER (REPLACED BY AN960JD10L)	1		
62	AN960JD10L	..WASHER (REPLACES AN960PD10L)	1		
63	AN960-10L	..WASHER	2		
64	MS35207-263	..SCREW	2		
65	206-070-934-001	..CONTROL ARM, LH	1		
65	206-070-934-002	..CONTROL ARM, RH	1		
66	MS35489-2	..GROMMET	1		
67	206-070-937-013	..PLENUM ASSY, LH	1		
67	206-070-937-015	..PLENUM ASSY, RH	1		
68	206-070-937-023	..DUCT	1		
69	206-070-937-025	..GASKET	1		
70	NAS697A08	..NUTPLATE (REPLACED BY MS21069L08)	6		
70	MS21069L08	..NUTPLATE (REPLACES NAS697A08)	6		
71	206-070-938-001	..GRILL, LH	1		

(1) INDEX NUMBER	(2) PART NUMBER	(3) ITEM NAME	(4) UNIT PER ASSY	(5) A V A I L	(6) U O C												
72	206-070-938-003	<p>FIGURE: 21-4. Ventilation system and defog installation, ram air (2489 thru sub) (Cont'd)</p> <p>.GRILL, RH</p> <p>NOTE 1: BRACKETS 206-073-114-001 AND -002, USE STUD 50-044-3 AND WASHER 50-013-11</p> <p>NOTE 2: MS27039-1-10 SCREW AND AN960JD10L WASHER ARE USED IN WITH 206-073-114-105 AND -106 BRACKETS</p> <p>NOTE 3: USE 3 WASHERS BETWEEN 206-070-939-001 TURN VANE AND 206-070-943-001 AND -002 BRACKETS AT EACH END OF THE TWO AFT SCREWS</p> <p style="text-align: center;">USABLE ON CODES</p> <table border="0" style="margin-left: auto; margin-right: auto;"> <thead> <tr> <th style="text-align: left;">CODE</th> <th style="text-align: left;">MODEL</th> <th style="text-align: left;">SERIAL NUMBER</th> </tr> </thead> <tbody> <tr> <td>A</td> <td>206BIII</td> <td>2489-3216</td> </tr> <tr> <td>B</td> <td>206BIII</td> <td>3217-3712</td> </tr> <tr> <td>C</td> <td>206BIII</td> <td>2489-3216, 3713-SUB</td> </tr> </tbody> </table> <p>1) UNLESS A USABLE ON PART NUMBER IS LISTED IN THE ITEM NAME COLUMN; NO CODE INDICATES THE PART APPLIES TO ALL SERIAL NUMBERS.</p> <p>2) IF THE SERIAL NUMBER IS BLANK THE PART APPLIES TO ALL SERIAL NUMBERS FOR THAT MODEL.</p>	CODE	MODEL	SERIAL NUMBER	A	206BIII	2489-3216	B	206BIII	3217-3712	C	206BIII	2489-3216, 3713-SUB	1		
CODE	MODEL	SERIAL NUMBER															
A	206BIII	2489-3216															
B	206BIII	3217-3712															
C	206BIII	2489-3216, 3713-SUB															

